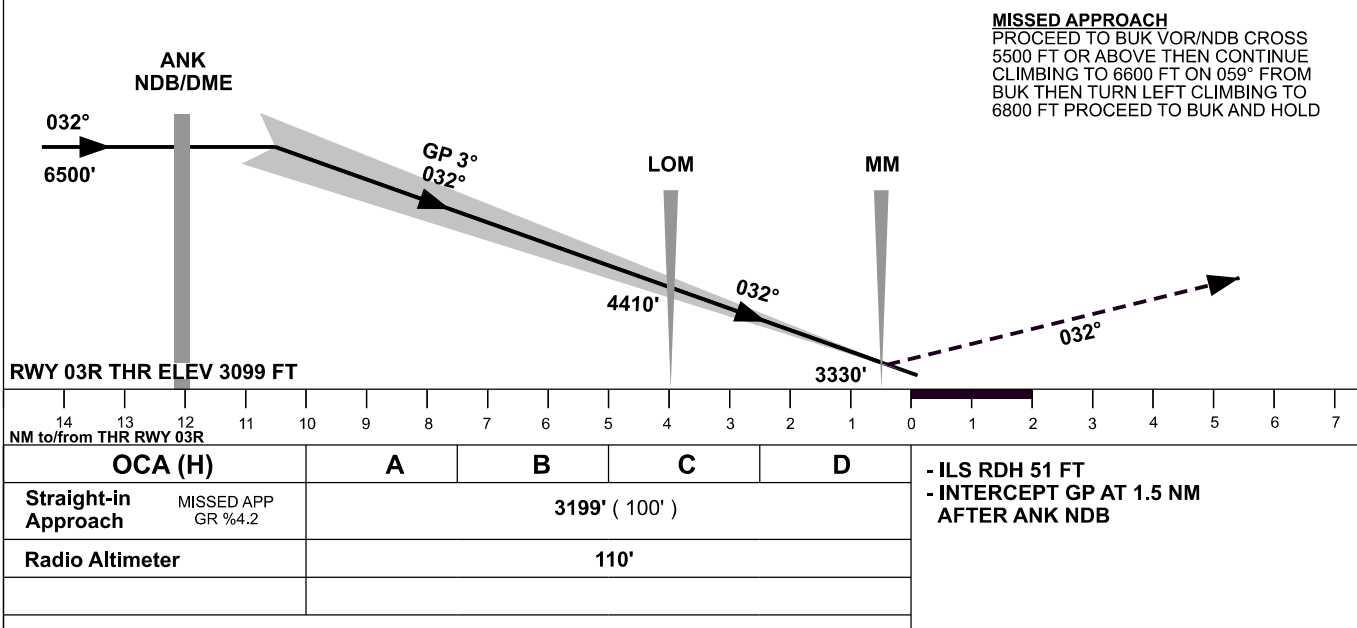
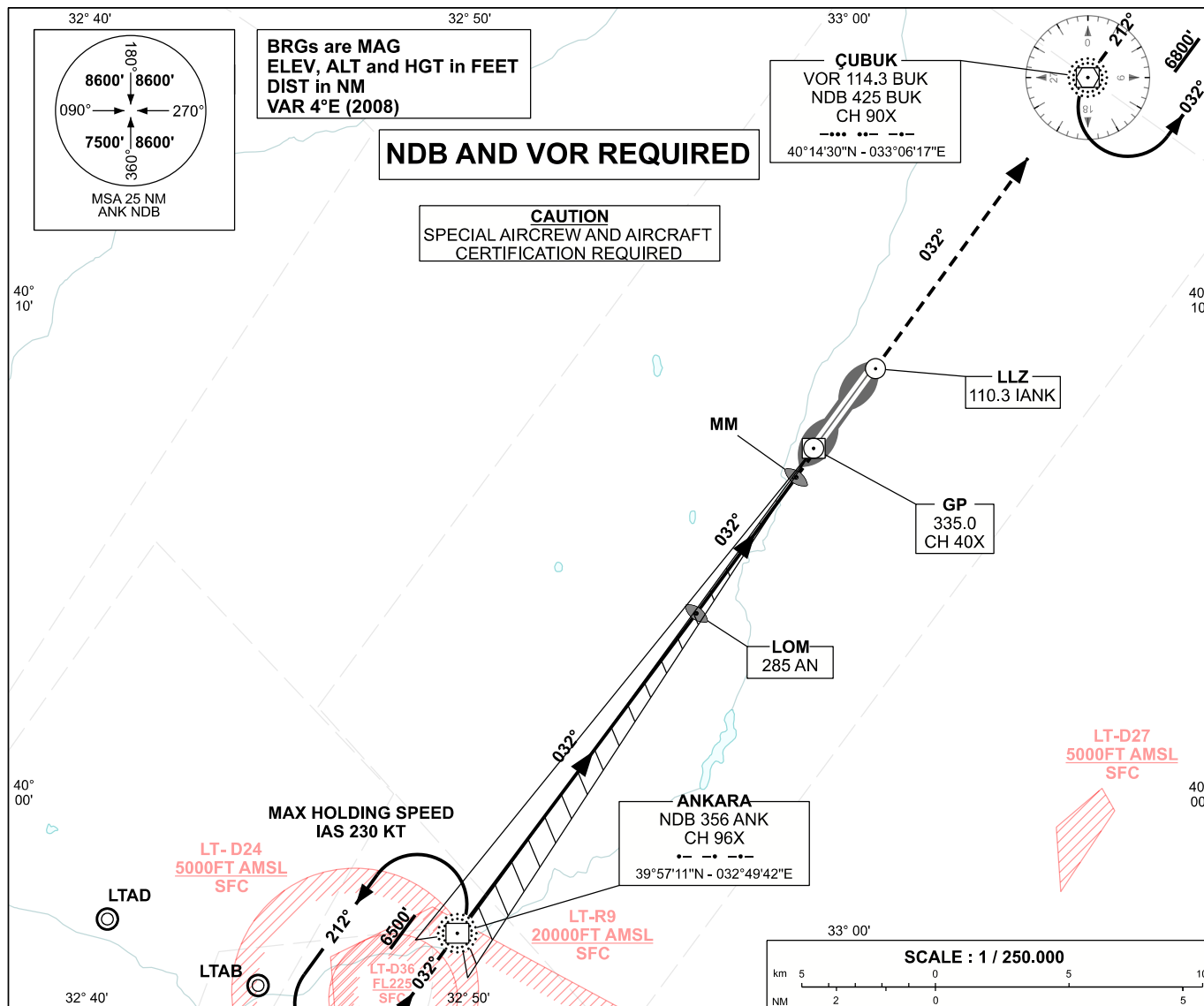


ANKARA/ESENBOĞA
ILS X CAT II
RWY 03R

APP	119.6 - 119.1	AD ELEV	3127 FT
TWR	118.1 - 257.8	TRANSITION ALTITUDE	10 000 FT
ATIS	123.6		

INSTRUMENT
APPROACH
CHART - ICAO



CHANGE: LT-D36 LIMITS